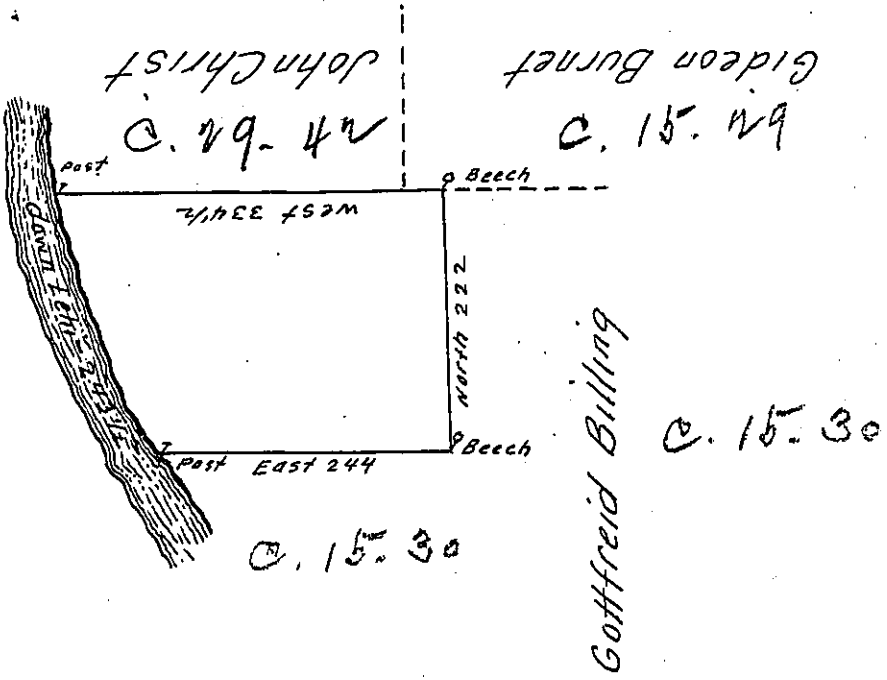


Bearing and distance
down Lehi-are

- 1. S. 5 E 42 1/2
 - 2. S. 20 E 113
 - 3. S. 33 1/4 E 88
- 243 1/2



By Virtue of a Warrant dated the 3^d April 1792 Surveyed the
 1st September 1793 to Guy ~~Maxwell~~ Maxwell the above described
 tract of land situate on the East side of Lehi- nearly opposite
 Spring creek in the County of Northampton. Containing Three
 hundred and ninety four Acres and the allowance of six p.
 Cent &c^a

To Daniel Brodhead Esq^r } p. Geo. Palmer D.S.
 Surveyor General

IN TESTIMONY that the above is a copy of the original remaining on file in
 the Department of Internal Affairs of Pennsylvania, made
 conformably to an Act of Assembly approved the 16th day of
 February, 1833, I have hereunto set my Hand and caused
 the Seal of said Department to be affixed at Harrisburg,
 this twenty seventh day of December 1905.

Geo. Palmer
 Secretary of Internal Affairs.